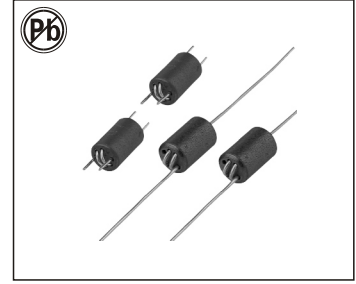


THROUGH-HOLE AXIAL WIDE BAND CHOKES R6H SERIES (01,02,03,04,05,06,07)



FEATURES:

- Regged construction
- Counter measures for FCC,VDE
- CSA,CE,VCC1
- EMI/RFI suppression
- High reliability
- Long term stability

COMMON APPLICATIONS:

- Telecommunication Equipment
- Wireless Communications Equipment
- Computer Products
- General Electronic Applications where EMI/RFI suppression is required

ELECTRICAL CHARACTERISTICS:

Part Number	Number of Turns	Impedance @25MHz	Impedance @100MHz
R6H-01	1.5	300	500
R6H-02	2.0	400	600
R6H-03	2.5	600	800
R6H-04	2.5	500	600
R6H-05	3.0	800	900
R6H-06	3.0	700	600
R6H-07	1.5 × 2	300	500

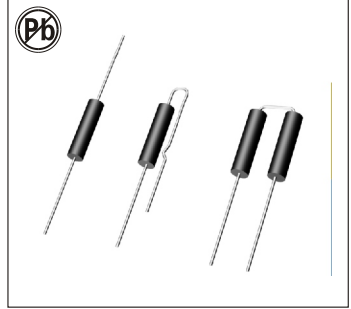
TECHNICAL INFORMATION: PHYSICAL CHARACTERISTICS:

CORE	1.5Ts	2Ts	2.5Ts	3Ts	2 × 1.5Ts

Ferrite core TYPE	A	B	C	D
R6H 6 × 10	6.0 ± 0.25	10.0 ± 0.30	0.75 ± 0.15	3.5 ref

• Testing:(Equivalent acceptable)
HP4191A Impedance Analyzer

THROUGH-HOLE AXIAL FERRITE BEADS FOR EMI SUPPRESSION RH SERIES



FEATURES:

- Ferrite Core
- Regged construction
- Counter measures for FCC,VDE
- CSA,CE,VCC1
- EMI/RFI suppression
- Small size 、 Low Cost

OPTIONS:

- Packaging: Tape & Reel is Standard
- Bulk packaging available for smaller quantities

APPLICATIONS:

- Noise Filtering
- Amplifiers
- Switching Regulators
- Power Supplies
- Triac Control Circuits
- SCR Control Circuits

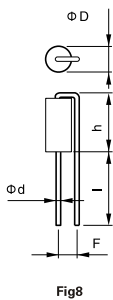
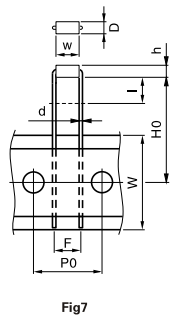
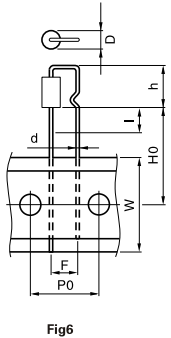
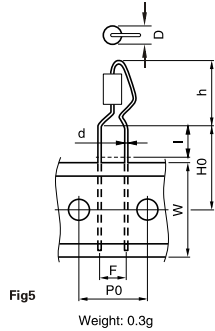
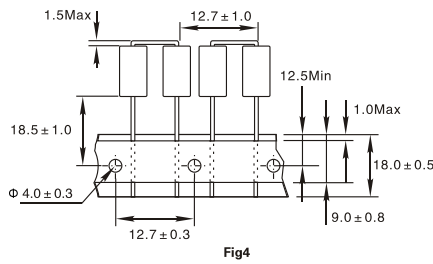
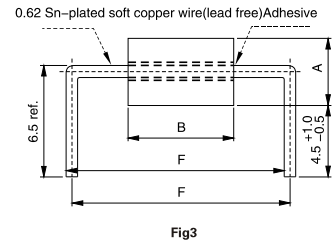
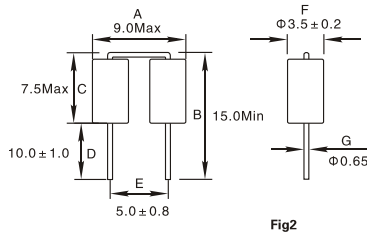
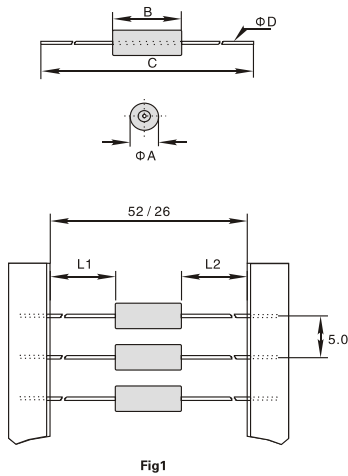
STANDARD SPECIFICATIONS

Part Number	Impedance @25MHz (Ω)Min	Impedance @100MHz (Ω)Min	A	B	C	D	L1-L2
RH-3530	25	40	3.5+/-0.2	3.0+/-0.3	62+/-2.0	0.6	1
RH-3545	30	60	3.5+/-0.2	4.5+/-0.3	62+/-2.0	0.6	1
RH-3547	35	60	3.5+/-0.2	4.7+/-0.3	62+/-2.0	0.6	1
RH-3560	50	75	3.5+/-0.2	6.0+/-0.3	62+/-2.0	0.6	1
RH-3575	60	90	3.5+/-0.2	7.5+/-0.3	62+/-2.0	0.6	1
RH-3580	60	100	3.5+/-0.2	8.0+/-0.3	62+/-2.0	0.6	1
RH-3590	80	120	3.5+/-0.2	9.0+/-0.3	62+/-2.0	0.6	1
RH-3512	30	130	3.5+/-0.2	12+/-0.3	62+/-2.0	0.6	1
RH-3514	50	150	3.5+/-0.2	14+/-0.3	62+/-2.0	0.6	1

Note: 1. K= ± 10%,M= ± 20%

TECHNICAL INFORMATION: PHYSICAL CHARACTERISTICS:

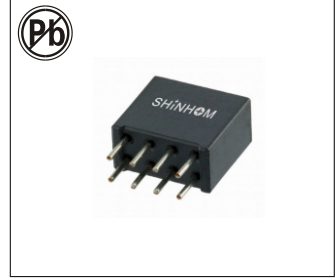
DIMENSIONS in mm



- Impedance: HP4191A or HP4194A HP4395A
- Soldering Methods: Wave,Reflow
- Operating Temperature:-25°C to +85°C
- Storage Temperature: -55°C to +125°C
- Terminal bending strength:24.5N Min

Note: All specifications subject to change without notice.

SMD POWER BEAD SMB4B SERIES



FEATURES:

- Small size, high current, high performance.
- Low DCR, excellent EMI suppression capability.
- Suitable for surface mounting equipment.

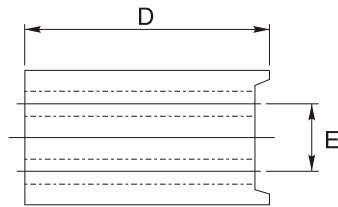
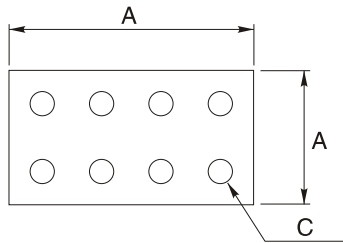
COMMON APPLICATIONS:

- VTR, digital set-top box, LCD Monitor
- DC/DC converters, xDSL
- Wireless communication equipment

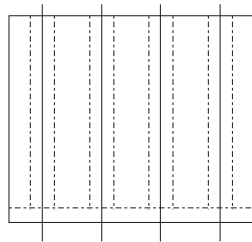
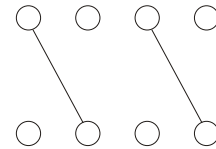
ELECTRICAL CHARACTERISTICS: 25°C

Part Number	Impedance 25MHz (Min)	Impedance 100MHz (Min)
SMB4B1155-141	140	255
SMB4B1111H-201	200	240
SMB4B1111H-2T-451	450	550
SMB4B1111H-3T-801	800	850
SMB4B1111L-121	125	210
SMB4B1111L-2T-281	280	450
SMB4B1111L-3T-551	550	800

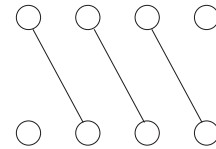
PHYSICAL CHARACTERISTICS & TYPE



TYPE: SMB4B-2T



TYPE: SMB4B-3T



Part No.	A	B	C	D	E
SMB4B1155	11 ± 0.3	5.5 ± 0.25	0.65REF	10.5 ± 0.3	2.54REF
SMB4B1111H	11 ± 0.15	11 ± 0.2	0.7REF	10.5 ± 0.3	2.54REF
SMB4B1111L	11 ± 0.15	11 ± 0.2	0.7REF	6.5 ± 0.3	2.54REF

Note:

1. The parameters of list are typical, atypical parameters can be customized according to customer's requirements.
2. Operating temperature: -40°C to 105°C

SMD EMI SUPPRESSION 5-HOLE FERRITE BEAD

SMB5H SERIES



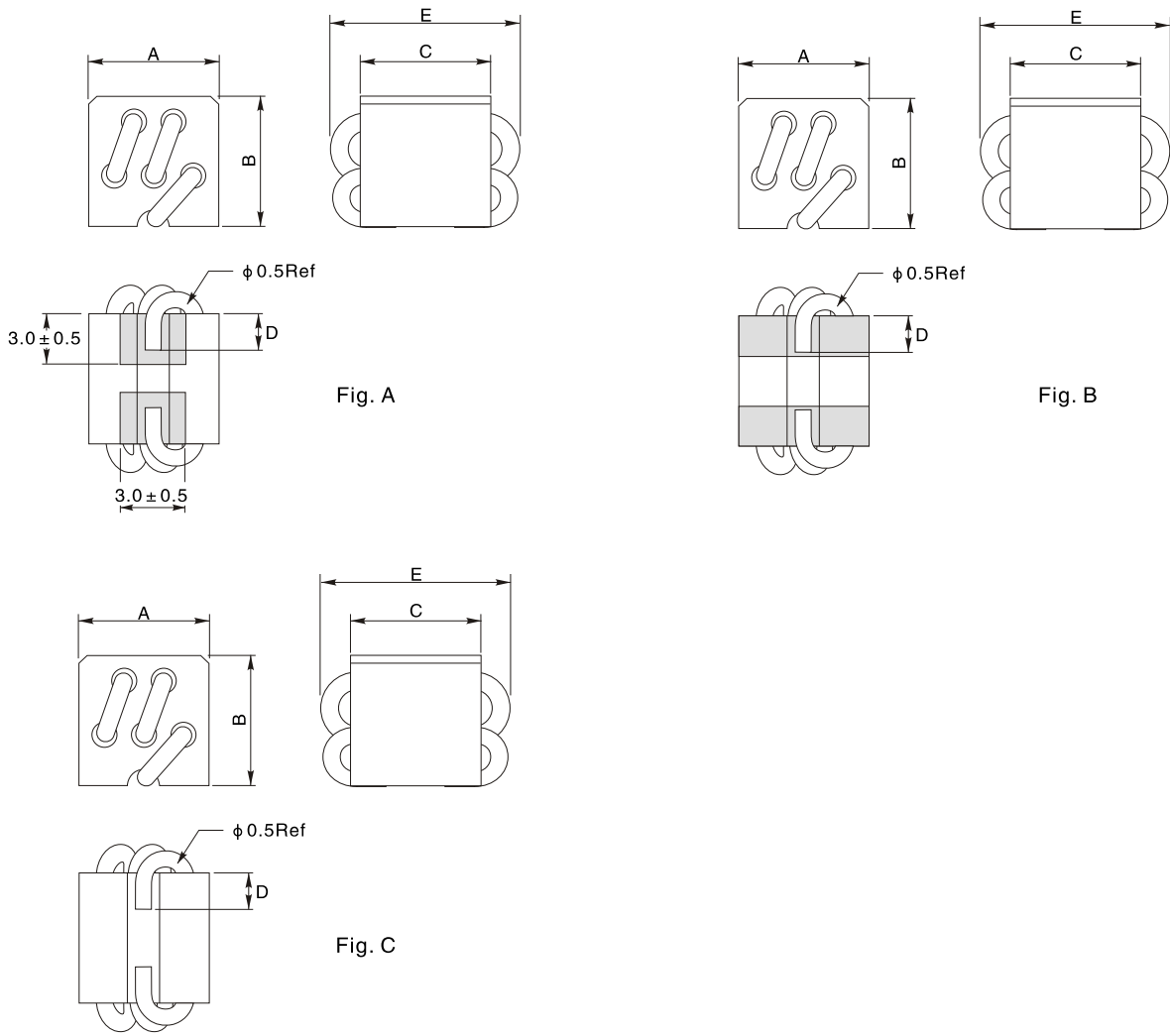
FEATURES:

- High Current rating
- Low DCR and high IDC beads inductor
- Compact and simple design with high reliability
- Very good SMD solution for traditional wide band choke
- Through-hole axial ferrite beads for EMI suppression
- Surface-mount wire wound beads with high frequency and EMI suppression

APPLCATIONS:

- Modems, PDP, LCD, and TVs converters
- Mobile radios, DC/DC converters
- Noise filtering devices
- Track and SCR control circuits
- Wireless communication equipments
- Computer disk drive and PC board to filter the EMI from outside sources such as car radios, mobile phones and VCRs

DIMENSIONS:(mm)



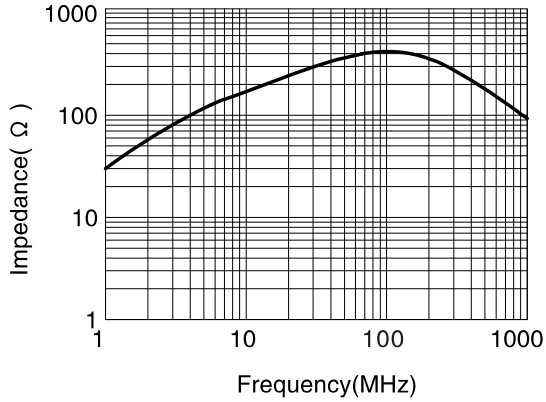
Part No.	A	B	C	D	E	Winding	Fig.
SMB5H0505C-2.5Ts	5.0 ± 0.25	5.0max	5.5 ± 0.3	2.0min	8.0max	φ 0.5mm*2.5Ts	C
SMB5H0505B-2.5Ts	5.0 ± 0.5	4.6 ± 0.5	5.5 ± 0.5	2.0max	8.0max	φ 0.5mm*2.5Ts	B
SMB5H0508C-2.5Ts	5.0 ± 0.25	5.0max	8.5 ± 0.3	3.5max	11.0max	φ 0.5mm*2.5Ts	C
SMB5H0508B-2.5Ts	5.0 ± 0.5	4.65 ± 0.5	8.5 ± 0.5	2.0 ± 0.5	11.0max	φ 0.5mm*2.5Ts	B
SMB5H0508A-2.5Ts	5.0 ± 0.5	4.65 ± 0.5	8.5 ± 0.5	2.0min	11.0max	φ 0.5mm*2.5Ts	A

SMD EMI SUPPRESSION 5-HOLE FERRITE BEAD

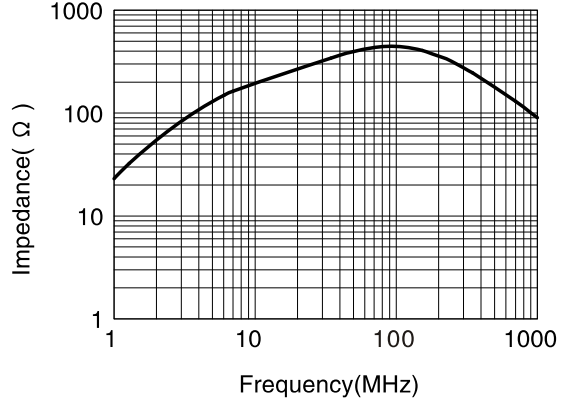
SMB5H SERIES

IMPEDANCE VS FREQUENCY CURVE

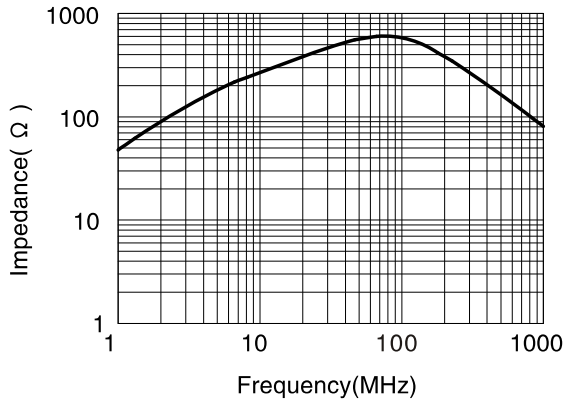
SMB5H0505C-2.5Ts



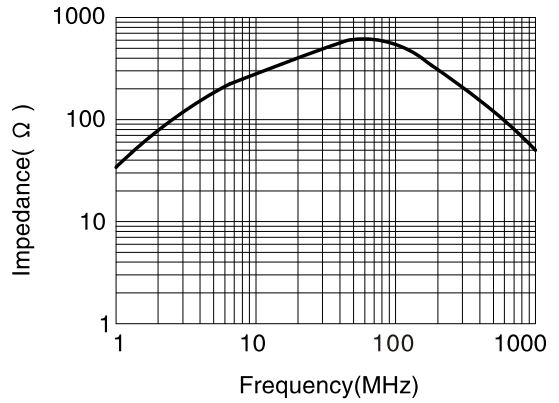
SMB5H0505B-2.5Ts



SMB5H0508C-2.5Ts



SMB5H0508B-2.5Ts



SMB5H0508A-2.5Ts

